

SPECIAL  
EDITION

2016  
Annual  
Report

Dear Shareholders,

We would sincerely like to thank you for actively participating in our recent survey; we received thousands of responses!

Thanks to your feedback and the topics put forward, we now invite you to discover in this special edition an overview of the themes included in L'Oréal's new Annual Report.

Discover more in the digital version which, thanks to an intuitive and immersive navigation experience, enables you to explore L'Oréal's top 10 highlights of 2016, the world of brands and outstanding innovations and all this through relevant articles and exclusive videos.

The new Annual Report can be found at [www.loreal-finance.com](http://www.loreal-finance.com)

I wish you an enjoyable visit!



SOPHIE GASPERMENT

*Group General Manager*

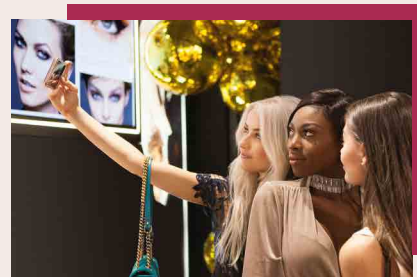
*Financial Communication and Strategic Prospective*



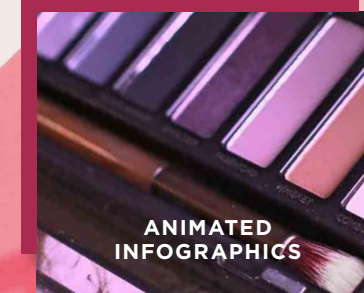
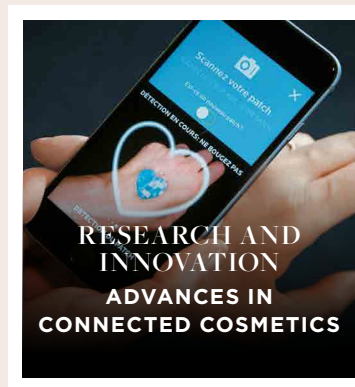
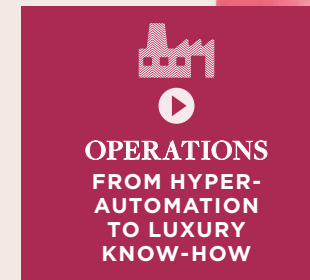
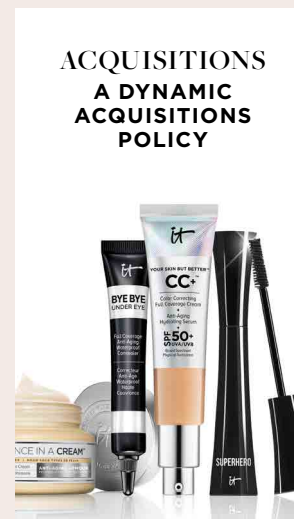
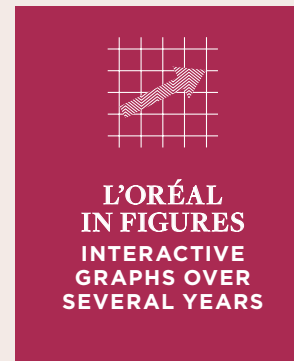
SPECIAL  
EDITION

# 2016 Annual Report

## FIND ALL L'ORÉAL'S 2016 NEWS AND EVENTS AT LOREAL-FINANCE.COM



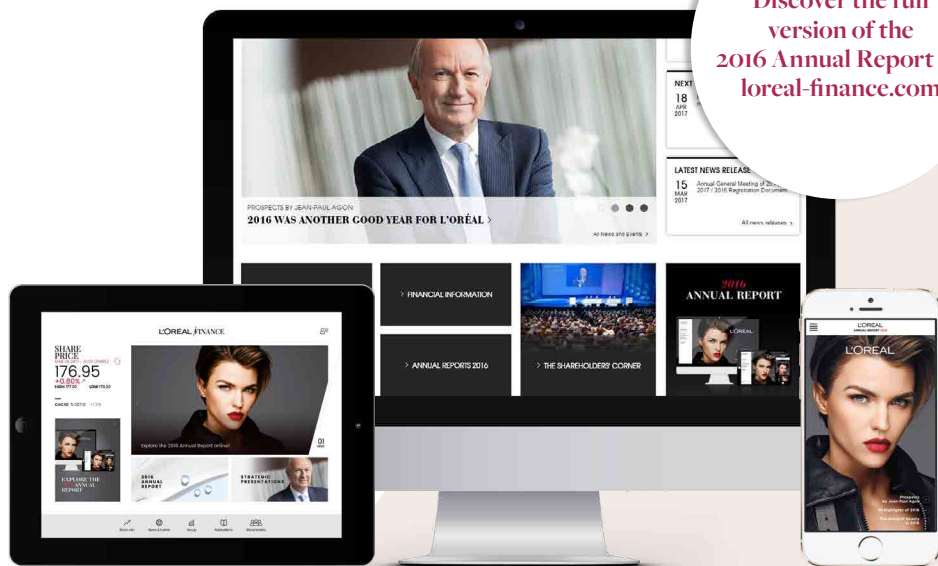
**MISSION AND STRATEGY**  
BEAUTY FOR ALL  
AND UNIVERSALISATION



...AND MUCH MORE!

# How to visit THE DIGITAL VERSION OF THE ANNUAL REPORT:

Discover the full  
version of the  
2016 Annual Report at:  
[loreal-finance.com](http://loreal-finance.com)



1

If you have the L'Oréal Finance mobile app on your smartphone or tablet, go to "Publications".

2

If you prefer to use your computer, go to [loreal-finance.com](http://loreal-finance.com) and click on the image below:



3

You can also scan this QR code with your smartphone or tablet:



## KEY DATE

### ANNUAL GENERAL MEETING

Thursday 20 April 2017 at 10 a.m.  
at the Palais des Congrès in Paris (France)

### JEAN RÉGIS CAROF

Director of Individual Shareholder  
and Market Authority Relations  
[jcarof@loreal-finance.com](mailto:jcarof@loreal-finance.com)

### VALERIE BOAS

Individual Shareholder Relations Manager  
[vboas@loreal-finance.com](mailto:vboas@loreal-finance.com)

Registered in France as a "Société Anonyme" with registered capital of 112,371,148.20 euros – 632 012 100 RCS Paris – Code NAF: 2042 Z – ISIN Code: FR0000120321 – Registered office: 14, rue Royale, 75008 Paris, France – Headquarters: 41, rue Martre, 92117 Clichy Cedex, France – Tel.: +33 1 40 14 80 50. For more information, please contact: L'Oréal, Financial Communications Department, 41, rue Martre, 92117 Clichy Cedex, France, visit the Internet site [www.loreal-finance.com](http://www.loreal-finance.com), download the **L'Oréal Finance mobile application** or contact us by email at [theletter@loreal-finance.com](mailto:theletter@loreal-finance.com). Photograph credits: Urban Decay, Shapecharge, Sixtine, L'Oréal Paris, L'Oréal, La Roche-Posay / DR, Geoff Shirley Gs Studios LLC, Eric Mercier / L'Oréal, X. Creation and layouts: Publicis Consultants | Verbe